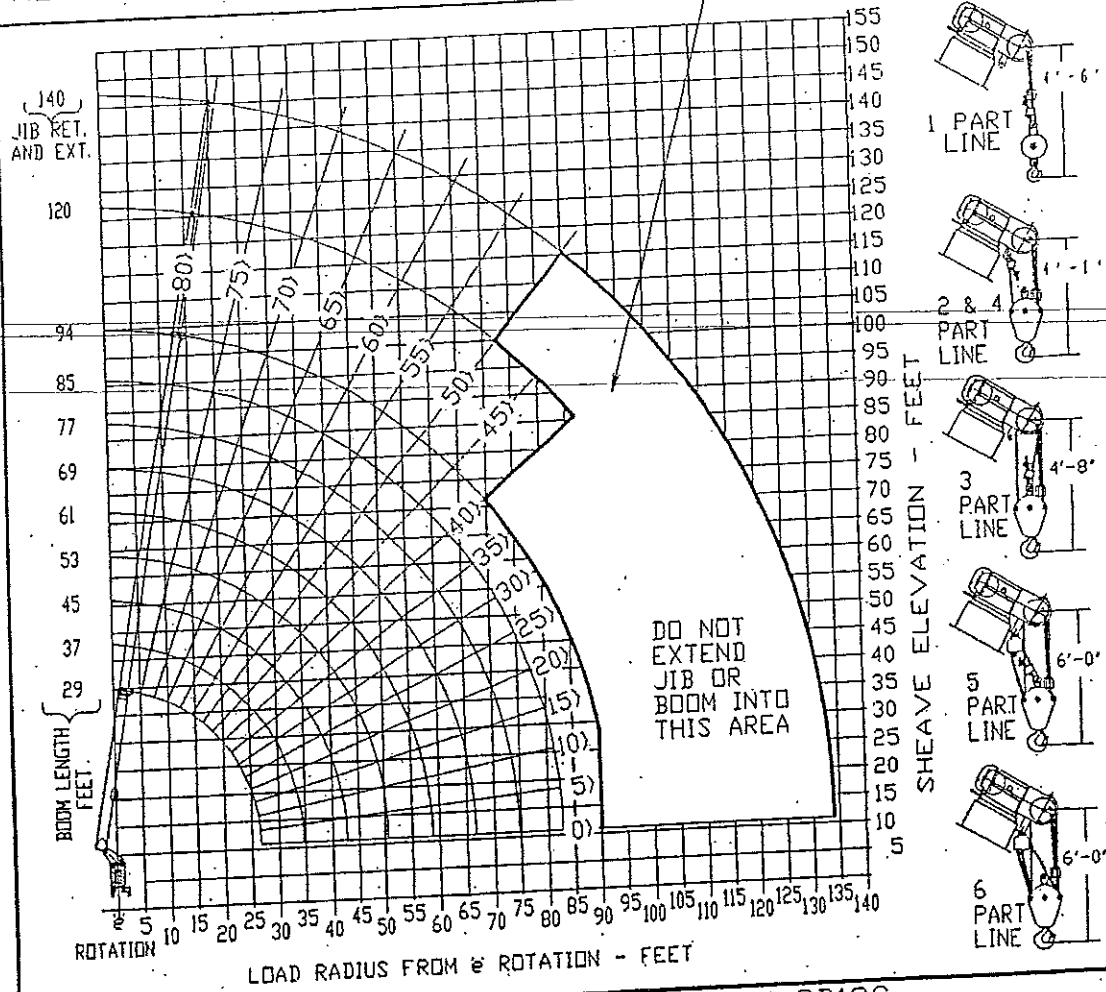


# MODEL 2700JBT RATED LIFTING CAPACITIES IN POUNDS



## HOIST SPECIFICATIONS - BRADEN PD12C

PERFORMANCE @ 3200 PSI	LOW SPEED-39 GPM		HIGH SPEED-63 GPM		
	LINE SPEED	LINE PULL LOW ROTATION	LINE PULL 6 & 37 EIPS	LINE SPEED	LINE PULL
1ST LAYER	140 FPM	8100 LBS.	8500 LBS.	230 FPM	7000 LBS.
2ND LAYER	155 FPM	8100 LBS.	8500 LBS.	255 FPM	6315 LBS.
3RD LAYER	170 FPM	8100 LBS.	8500 LBS.	285 FPM	5750 LBS.
4TH LAYER	188 FPM	8100 LBS.	8500 LBS.	304 FPM	5270 LBS.
5TH LAYER	196 FPM	7800 LBS.	7800 LBS.	317 FPM	4870 LBS.

USTC INCORPORATED YORK, PA.  
MODEL 2700JBT RATED LIFTING CAPACITIES IN POUNDS

LOAD RADIUS FEET	BOOM LENGTH IN FEET									
	BOOM ANGLE	29	BOOM ANGLE	45	BOOM ANGLE	61	BOOM ANGLE	77	BOOM ANGLE	94
5	78)	54000								
10	64)	34000	76)	22000						
12	58)	29000	74)	22000	78)	21000				
15	49)	24000	69)	21700	75)	20000	79)	16000		
20	35)	17900	62)	17000	70)	15300	75)	13300	79)	10200
25	20)	13500	54)	13500	65)	12500	71)	11100	76)	9000
30			46)	11000	60)	10400	67)	9500	73)	8000
35			36)	8800	55)	8800	63)	8000	70)	7000
40			24)	6900	49)	7200	59)	6800	66)	6100
45					41)	5700	55)	5800	63)	5300
50					33)	4550	50)	4650	60)	4600
55					23)	3700	45)	3800	56)	3900
60							39)	3100	52)	3250
65							32)	2550	48)	2650
70							25)	2050	43)	2200
75									38)	1800
80									33)	1450
85									27)	1150

PERMISSIBLE ROPE PULL

NUMBER PARTS LINE	9/16" DIA. 400' OF LOW ROTATION FLEX X 19 PLUS	NUMBER PARTS LINE	9/16" DIA. 340' OF 6X37 IWRC EIPS
SINGLE	* 8100 LBS.	SINGLE	8500 LBS.
TWO	16200 LBS.	TWO	17000 LBS.
THREE	24300 LBS.	THREE	25500 LBS.
FOUR	32400 LBS.	FOUR	34000 LBS.
FIVE	40500 LBS.	FIVE	42500 LBS.
SIX	48600 LBS.	SIX	51000 LBS.
SEVEN	** 54000 LBS.	SEVEN	** 54000 LBS.

DO NOT OPERATE THIS CRANE UNLESS YOU KNOW THE DIAMETER AND TYPE ROPE CURRENTLY INSTALLED ON THE CRANE. DO NOT EXCEED PERMISSIBLE ROPE PULL OF ROPE INSTALLED ON THIS CRANE. DO NOT USE 3 PART LINE WITH BOOM LENGTH OVER 61 FEET. DO NOT USE 4 PART LINE WITH BOOM LENGTH OVER 45 FEET. DO NOT USE 5, 6 OR 7 PART LINE WITH BOOM LENGTH OVER 29 FEET.

DO NOT OPERATE THIS CRANE UNTIL YOU HAVE READ AND UNDERSTOOD

'LIFTING NOTES' DECAL ON PEDESTAL.

\* SINGLE LINE PULL ON 5 TH LAYER OF HOIST DRUM WILL BE 7,800 LB.

\*\* REQUIRES OPTIONAL SNATCH BLOCK

1703804

# LOAD CHART

## RATED JIB LIFTING CAPACITIES IN POUNDS

26-46 FT. 2 SECTION JIB			26 FT. FIXED JIB	
MINIMUM BOOM ANGLE	JIB FULLY RETRACTED	JIB FULLY EXTENDED	MINIMUM BOOM ANGLE	CAPACITY
79)	5400	3400	79)	5500
75)	4700	3200	75)	4500
70)	3800	2700	70)	3700
65)	3100	2100	65)	3000
60)	2400	1800	60)	2500
55)	1500	1300	55)	1600
50)	1200	900	50)	1300
45)	750	500	45)	850
40)	500	500	40)	600

1. CAPACITIES BASED ON ANGLE OF MAIN BOOM REGARDLESS OF BOOM LENGTH.
2. RATED LIFTING CAPACITY ABOVE THE BOLD LINE IS BASED ON STRUCTURAL STRENGTH. OVERLOADING THE JIB MAY CAUSE STRUCTURAL COLLAPSE OR UPSET.
3. DO NOT USE JIB FOR MULTI-PART LINE OPERATIONS.
4. IF ACTUAL BOOM ANGLE FALLS BETWEEN CHART VALUES LISTED, USE LIFTING CAPACITY FOR NEXT LOWER BOOM ANGLE.

### WEIGHT REDUCTION FOR LOAD HANDLING DEVICES

- HEADACHE BALL . . . . . 170 LBS.
- HOOK BLOCK (SINGLE SHEAVE) . . . . . 220 LBS.
- HOOK BLOCK (DOUBLE SHEAVE) . . . . . 300 LBS.
- HOOK BLOCK (TRIPLE SHEAVE) . . . . . 500 LBS.
- 2-SECTION JIB STOWED . . . . . 200 LBS.
- 2-SECTION JIB ERECTED (RETRACTED) 1600 LBS.
- 2-SECTION JIB ERECTED (EXTENDED) 1800 LBS.
- 1-SECTION JIB STOWED . . . . . 100 LBS.
- 1-SECTION JIB ERECTED . . . . . 1200 LBS.

1703819

